

## WHAT'S INCLUDED:

### SPEAKER ●

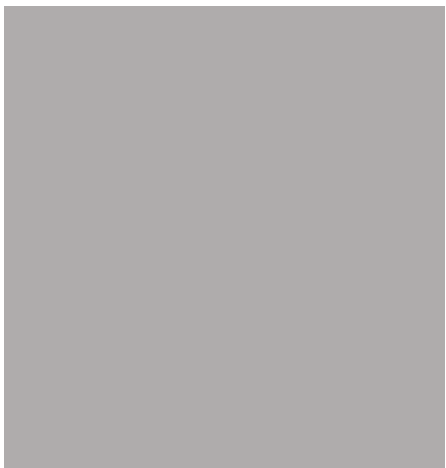
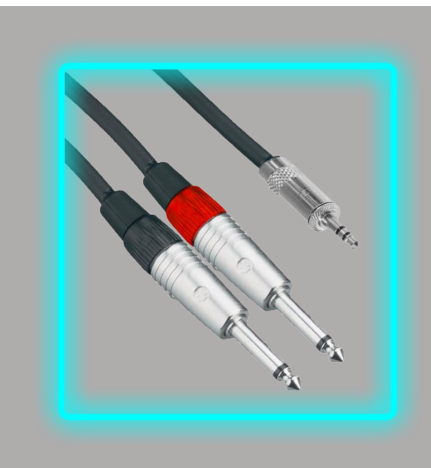
1 x BEHRINGER MPA40BT-PRO

### RED/BLACK JACK > 3.5MM AUX ●

CONNECTS SPEAKER TO YOUR DEVICE

### POWER CABLE ●

2 X IEC LEAD TO POWER SPEAKER



## SET-UP INSTRUCTIONS:

1

- Plug power cable into PA/mains (to recharge battery). Use Power switch to turn the PA on/off.

2

- AUX set-up: Connect red/black audio jack to **MIC 1/MIC 2** on the back of the PA

3

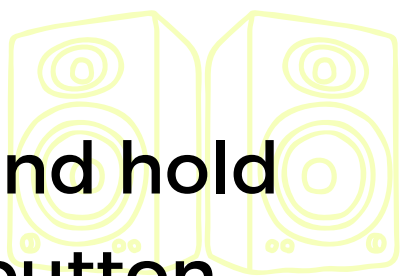
- Connect 3.5mm AUX to audio device (phone, laptop etc.)

4

- BT set-up: Press and hold the blue pairing button until the LED flashes. Open BT settings on your device and connect. When the LED light is solid, you can begin playing music from your device.

5

- Adjust volume with **BT/AUX LEVEL** and adjust **MAIN LEVEL**.
- Adjust EQ **BASS & TREBLE** TO DESIRED LEVEL



NEED HELP?  
CALL OUR OFFICE

8388 5545





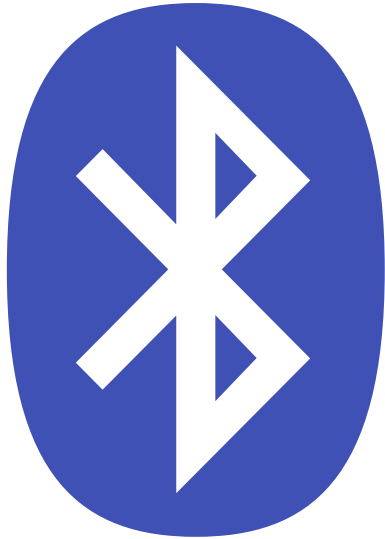
# 200W SINGLE SPEAKER

OLYMPIC

Party Hire

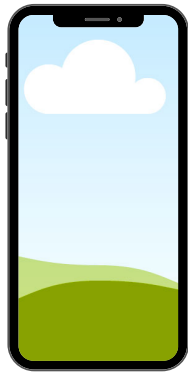
2

4



5

3



2



Battery remaining

1

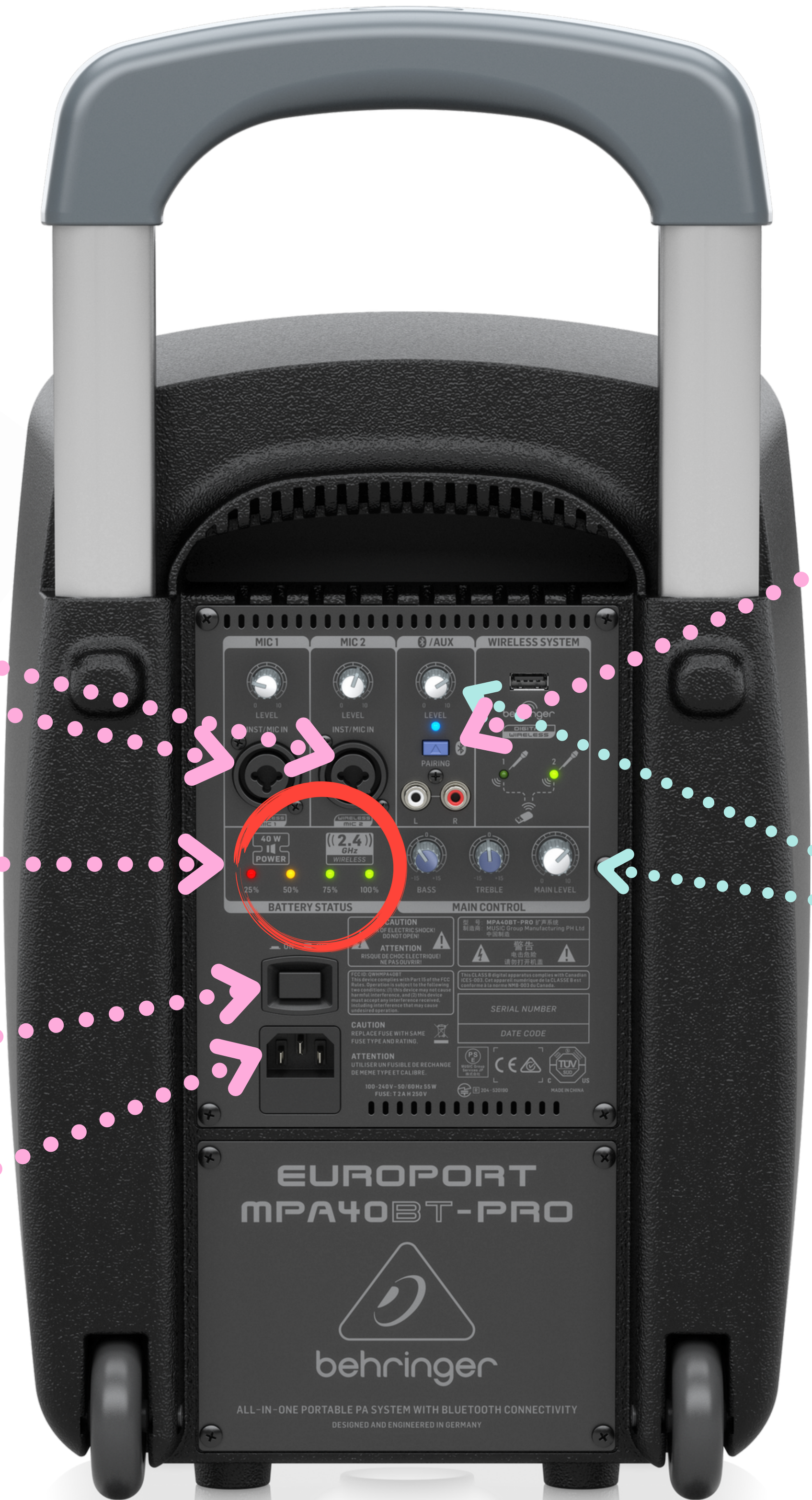


NEED HELP?  
CALL OUR OFFICE

8388 5545



FIND OUT MORE AT [WWW.OLYMPICPARTYHIRE.COM.AU](http://WWW.OLYMPICPARTYHIRE.COM.AU)



EUROPORT  
MPA40BT-PRO



behringer

ALL-IN-ONE PORTABLE PA SYSTEM WITH BLUETOOTH CONNECTIVITY  
DESIGNED AND ENGINEERED IN GERMANY