

WHAT'S INCLUDED:

SLUSHIE MACHINE

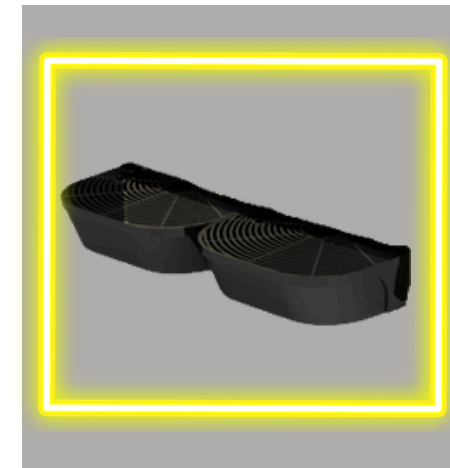
SLUSHIE MACHINE

DRIP TRAYS

REMOVABLE TRAYS FOR SPILLAGE/DRIPPING

CUPS & STRAWS

50 CUPS AND STRAWS



SET-UP INSTRUCTIONS:

BEFORE YOU START:

Find an appropriate, stable location for the machine to sit. This machine is approximately 47kg **without** liquids, so please take care (and 2 people) when moving it.

Timing - Note the time it takes to freeze can depend on outside temperature, whether the unit is in direct sunlight, the consistency of the mix & at what point any alcohol is added. Time the set up to allow at least 6-8 hours before your event starts to ensure the mix freezes. For example if your event starts at 6pm, it would be advised to turn the machine on and have the mix ready by 11am of the same day

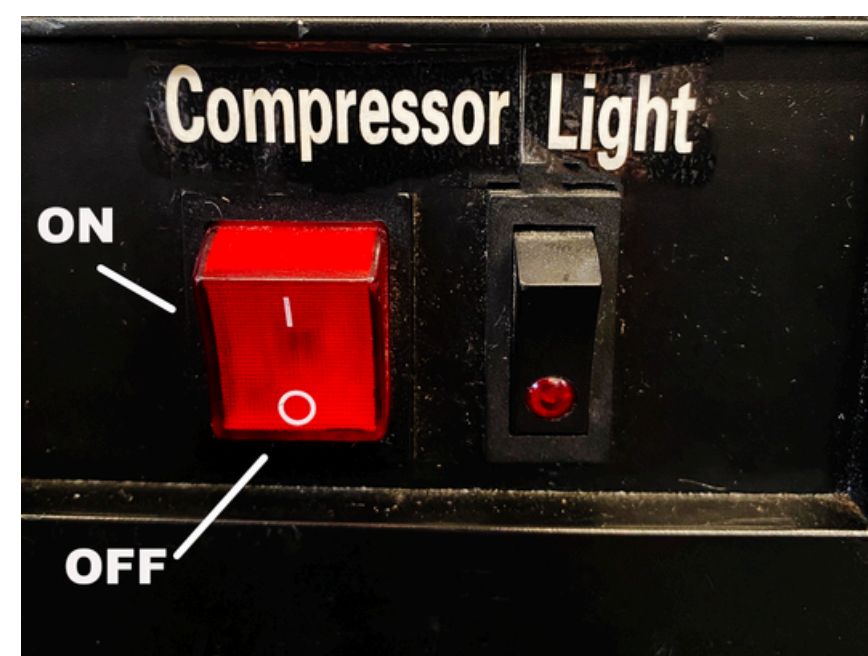
- Plug into a suitable power source (consumption: 1100W)
- Check the machine for leaks (although every care is taken to ensure the machine is correctly sealed, they can occasionally be dislodged during transport).
- Place approx. 5L of water in each barrel.
- Turn on **MASTER POWER + BEATER (button #1 on image)** and run tap briefly.
- Check the underside of the bowl for any sign of a leak. Turn **BEATER** off and empty tanks using dispenser handle
- If there are any leaks, please refer to the troubleshooting instructions on the opposite side)

STEP 1: add **exactly** 8L of water + 2L bottle of syrup to each tank

STEP 2: turn power on at wall and press the **COMPRESSOR** button to the ON position (red light should be illuminated).

STEP 3: set to **SLUSH** mode. Switches 1 and 2 should be on (red light illuminated) for each barrel in use.

COMPRESSOR and LIGHT SWITCH ON/OFF



If you would like to add alcohol for frozen cocktails, you must wait until the mix has turned to slush before adding alcohol to the tank.

NEED HELP?
CALL OUR OFFICE

8346 5545



PLEASE NOTE DO NOT ADD
FRUIT OR ICE TO TANKS

Failure to follow instructions may cause damage
to the machine



TROUBLESHOOTING/TIPS & TRICKS



TANK(S) ARE LEAKING:

- Empty tanks of all water/slushie mix
- Use your thumbs at the front of the machine (on the hard plastic edge under the tap) to push firmly upwards, then pull towards you to release the bowl
- Adjust the white rubber seal on the rear of the machine so it is sitting flush with the back. Ensure the beater/auger is inserted correctly in the front of the machine as you reset the bowl,
- Check for leaks again. If the issue persists, or the machine is leaking from the tap, please contact support.

BEATER STOPS TURNING:

- If at any time, the slushie mix inside the tank becomes too thick and the beater stops turning, adjust the control panel so that the relevant tank is in **COOL** mode by pressing the **COMPRESSOR** button for the relevant tank. (Leave the **POWER** and **LIGHT** switches on).
- Once the beater begins turning again, you can adjust the control panel back to **ICE** mode.
- If the issue persists throughout the night, please contact support.

TRANSPORTATION:

- These slushie machines contain a compressor, so they **cannot** be transported on their side (just like refrigerators).
- We recommend transporting them in the back passenger seat of your car, behind the front passenger seat.
- You can secure the machine either with a seatbelt or by adjusting the front passenger seat back, to lock it in.
- Please ask one of our helpful staff if you need assistance putting in/taking out a machine (otherwise you can request delivery/collection - fees apply).

***FREEZING TIME MAY VARY BETWEEN 4-6 HOURS,**

***If you are adding alcohol, it must be added **AFTER** the mixture is frozen**

NEED HELP?
CALL OUR OFFICE

8346 5545

